

SERIES: P32

Dial: 2½", 4", 6"

Element: Brass or Stainless Steel

DESCRIPTION

Indumart P32 Series Capsule Element Pressure Gauges with Bayonet Bezel are designed to measure low positive/negative gauge pressures. These gauges are mostly used in pressure measurement of gaseous media in pharmaceutical industry, exhaust gas, filters and laboratory applications.

They are equipped with two capsules soldered together. While in service, the capsule movement is converted into the pointer rotation. The measuring element can be specified as stainless steel or brass.

Indumart P32 Series Capsule Element Pressure Gauges come in a sturdy stainless steel case with bayonet bezel and a blow-out disk for maximum safety. These heavy duty pressure gauges have the advantages of high sensitivity, good reliability and long service life.

Optionally, these pressure gauges may be ordered with back flange for wall mounting, safety glass window and black-painted steel case.

SPECIFICATIONS

Accuracy	1.6%
Dial Sizes	2½" (63 mm), 4" (100 mm), 6" (160 mm)
Case & Bayonet Bezel	Stainless steel (standard), painted black steel (option)
Connection	Back or bottom
Thread	¼" NPT (2½" dial); ½" NPT (4" & 6" dials); BSP (option)
Blow-out Disk	NBR
Window	Glass, safety glass (option)
Adjustment	Zero adjustment on the dial
Capsule Element	Brass (std.), st. steel (option)
Max. Temperature	45°C
Range	0...10 to 0...240 in. H ₂ O; 0...2.5 to 0...60 kPa; 0...25 to 0...600 mbar Vacuum ranges are available

DIMENSIONS (mm) & WEIGHT

	Ø100 mm	Ø160 mm
D1	110	160
D2	100	149
H1	140	198
H2	80	88
L	49	50
Weight (g)	530	1020

Low Pressure Applications

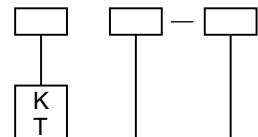


ORDER CODES

Model P32

CONNECTION

Back
Bottom



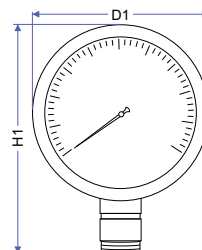
DIAL SIZE

63 mm (2½")
100 mm (4")
160 mm (6")

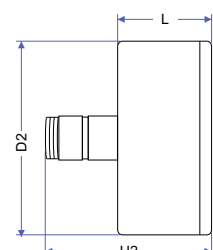
OPTIONS (more than one option may be selected)

Stainless Steel Internals
Steel Case (painted black)
Safety Glass Window
BSP Thread
Back Flange for wall mounting

Example: P32T4-IT, MK



Bottom connection



Back connection

Specifications may change without prior notice.